



► **MEDIA ROOM, RIGHT**

**Le Bambole sofa** by Mario Bellini for B&B Italia, bebitalia.it **Tulip M light** by Seyhan Özdemir & Sefer Çağlar for Autoban, autoban212.com **Bloomy side table** by Patricia Urquiola for Moroso, at Hive, hivemodern.com **Carolina chair** by Doriana e Massimiliano Fuksas for Poltrona Frau, at Hive, 820 NW Glisan St, hivemodern.com **Eluis throw** by Creation Baumann, creationbaumann.com **Esedra pouf** by Monica Förster for Poltrona Frau, at Hive, hivemodern.com **Flat.C wall unit** by Antonio Citterio for B&B Italia, bebitalia.it **803D Speakers** from Bowers & Wilkins, bowers-wilkins.com **Barn Owl sculpture** by Theodor Kämer for Nymphenburg, by special order at Relish, shoprelish.com

► **OPPOSITE**  
Designer Andee Hess in the 937 lobby



## Glass House

Extreme angles and glamorous materials collide in a Pearl District penthouse

► LISA RADON

**IN THE 15TH-FLOOR** penthouse of the Pearl District's 937 building, nearly all of the walls are made of floor-to-ceiling windows, allowing the city itself to become an extension of every room. "It affects everything in a subtle way when everywhere you look is a city view," says principal interior designer Andee Hess of Osmose. So, for her client, an Internet entrepreneur, Hess turned the main room "into a serene, low-lying experience, to keep everything neutral." For example: a floor-hugging sofa in a nubby wheat hue rests on a chevron-pieced hair-on-hide rug, caramel against pale oak floors. And yet "neutral" is perhaps not the first word one would apply to what Hess affectionately calls "The Pad."

Sleek surfaces like the white glass that wraps the long entry hall and the luxe white Calcutta marble cladding the wet bar and fireplace deliver a cool neutrality with a Halston-esque edge. These finishes provide a clean background for showcasing the owner's adventurous contemporary art collection of large-scale abstract paintings, lenticular pieces, and wall-based installations that hold their own against the busy texture of the external cityscape.

With a pedigree that includes time as the head of interiors at Skylab Architecture on projects like the Doug Fir Lounge



**1 Make an impact with art.** Hess and the homeowner worked with Heidi McBride (heidimcbridegallery.com) to help curate an art collection. For more limited budgets, Hess recommends Together Gallery (togethergallery.com) on NE Alberta Street. "Life and Limb (lifeandlimb.net) also has prints that are more accessible," Hess says.

**2 Hess likes to incorporate metals.** "Clackamas Steel [& Manufacturing] has an awesome scrap metal yard with discarded cafeteria trays and carts," she explains. "They just take a little love and creativity to use."

**3 Hess shops at Hive (hivemodern.com) and Moss (mossonline.com).** "Another unusual source is local company Fawn & Forest (fawnandforest.com)," she says. "It has a lot of interesting sculptures that could take the place of the more expensive stuff you see at Moss."

**4 Salvage items creatively.** For this particular project, Hess says, "The stacked pieces of wood in the media room came from my house. They were lids of French-oak wine barrels we'd taken apart to panel another job."

**5 "I focus more on materials rather than on bright colors to enhance a space,"** Hess says of her tendency to use neutral hues on walls. Examples include installing vivid tiles in a bathroom or covering a wall in cork.

**6 Don't think you have to stay stateside with your shopping.** Hess's favorite source for wallpaper is Amsterdam-based company Maxalot, where she found wall art by eBoy for the guest room.



◀ **LIVING ROOM, LEFT**  
**Tufty-time sofa** by Patricia Urquiola for B&B Italia, bebitalia.it **Bowl with Hippopotamus** by Hella Jongerius for Nymphenburg, at Relish, shoprelish.com **Gold of Venus** by Robert A. Nelson, represented by Beppu Wiarda Gallery, 319 NW Ninth Ave, beppugallery.com **Antibodi lounge chairs** by Patricia Urquiola for Moroso, at Hive, hivemodern.com **Wall installation** by Justin Gorman and Caleb Freese, represented by Heidi McBride Gallery & Art Consultancy, 3570 SW River Pkwy, heidimcbridegallery.com **Custom polished aluminum coffee table and “Übermensch” side table** by Osmose, built by Jethro Smith of Technites **“Mr. Crowley” hide rug** by Kyle Bunting, kylebunting.com **Gold Cactus, The Family Portrait, and The Rocking Chicken Ride** (beside fireplace, left to right) by Jaime Hayon for Lladró, lladro.com

▶ **RIGHT**  
**Tricot seating** by Dominique Perrault and Gaëlle Lauriot-Prévost for Poltrona Frau, at Hive, hivemodern.com **Landmine 3** by Marty Schnapf, represented by Heidi McBride Gallery & Art Consultancy, heidimcbridegallery.com **Pumpkin table** by Seyhan Özdemir & Sefer Çağlar for Autoban, autoban212.com

▶ **BEDROOM, OPPOSITE**  
**Little Universe** by Katy Stone, sourced through Heidi McBride Gallery & Art Consultancy, heidimcbridegallery.com **Cubik lamp** by Jean Marie Massaud for B&B Italia, at Hive, hivemodern.com **Porcelain Rhinoceros** by Peter Anton von Verschaffelt for Nymphenburg, nymphenburg.com **SOHO Sideboard** by Boca Do Lobo, at DeMorais, demoraisid.com **Fes Plexiglas lamp** by Didier Gomez, at Ligne Roset, ligneroset.com **Custom bed** by Andee Hess with MADE Inc and Adam Arnold, made-studio.com and adam-arnold.com



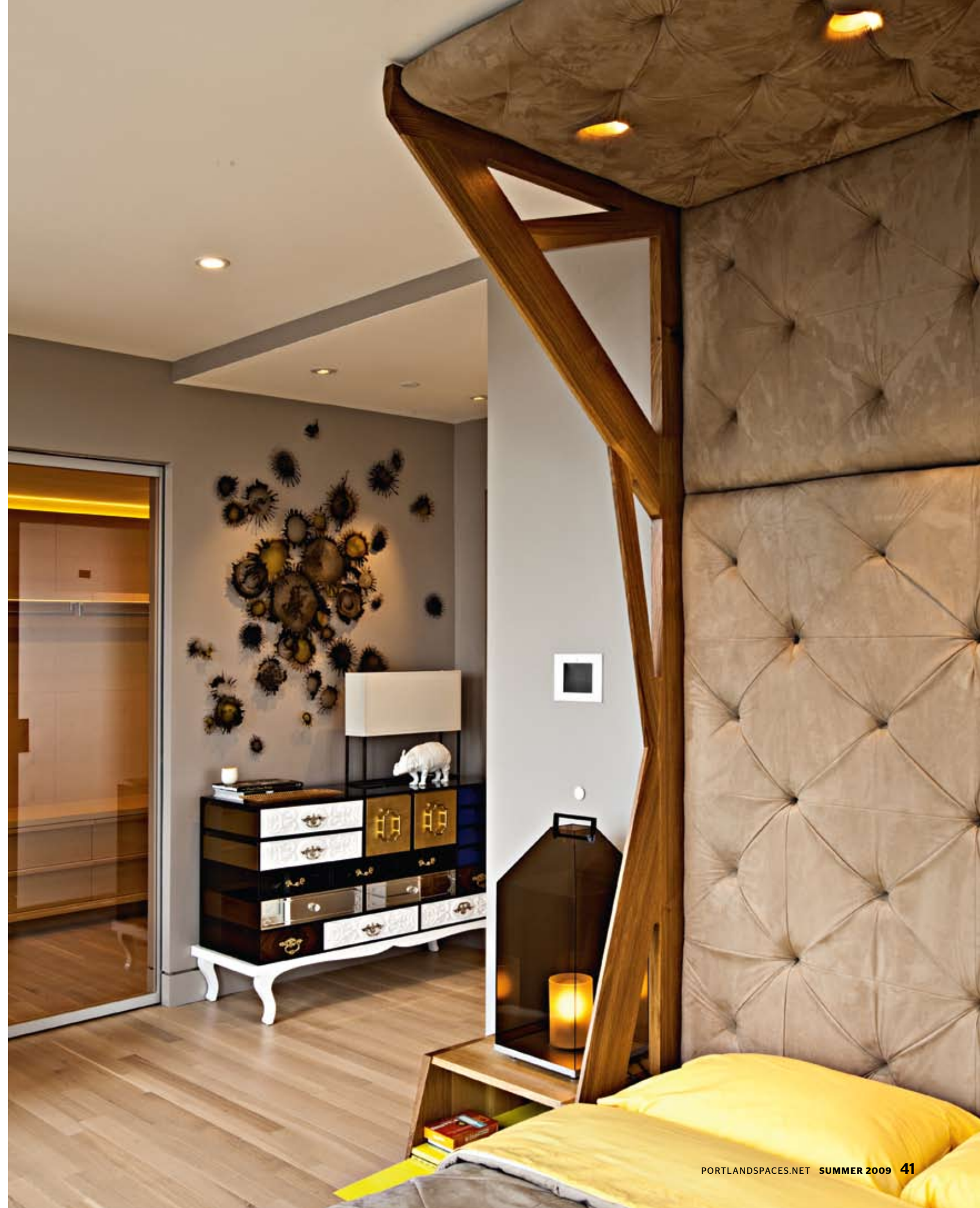
and Sinju Restaurant, Hess is no stranger to high glam. But here, a bit of flash comes with a knowing wink. Take note of the gold leafing on what Hess refers to as the “junk drawer” in the entry hall. Or consider the explosion of a midcentury Swarovski crystal chandelier above the oak dining table—a residential variation on a gift from the Austrian government to the Metropolitan Opera House.

Hess also knows how to counterbalance sleek with sanctuary. Warm materials contrast with cool surfaces throughout the space, whether it’s the richly colored, unstructured sofa against a burly live-edge coffee table in the media room or the upholstered ultrasuede headboard of an angular bed designed by Hess. “For the bed, we started with ideas of tents and forts and sketched a lot on those ideas,” says Hess, “but we were also inspired by the architecture of Herzog and de Meuron.”

Designer and client hit it off from the beginning. So while Hess originally was asked to consult on tile selection for the

**7 Cover your floors well.** Hess ordered rugs from Madison Millinger (madisonmillinger.com), but to save money, she recommends choosing a carpet from a store like Marion’s Carpet Warehouse (marionscarpets.net) and having it cut and bound to create the right-size rug for your room.

**8 Look to other designers to keep your own work challenging.** Hess follows the work of Autoban, Jaime Hayon, and Matali Crasset.





◀ **LEFT**  
**"Seohs"** custom shoe-shelving designed by Andee Hess, fabricated by MADE Inc. Acrylic boxes from Flair Plastics, flair-plastics.com

bathroom, the project grew to become an integrated condo design. The homeowner had found the concept of the 937 building intriguing, with its fractal-inspired exterior and modern details like the sculptural lobby wall (also designed by Hess). Together they incorporated the concepts behind the building into the penthouse. Angled geometry, triangles, and faceted surfaces—the white lacquered cabinet Hess designed for the entry is a showstopper—appear in room after room.

But form also follows fun, as in pieces like the custom aluminum cocktail tables with surfaces shaped like the Superman emblem (dubbed "Übermensch" tables after Nietzsche's superman) and the transformation of a closet into what Hess calls "the infinity wine cellar," lined with mirrors and fitted with illuminated clear acrylic rods and shallow shelves. "We weren't afraid to bling it out," Hess says, laughing. To wit: the LED lights that trace the line where window meets ceiling are infinitely adjustable to achieve any color—from a subtle blush or warm white to Prince purple.

Avant-garde pieces by internationally recognized designers play well with knockout commissioned installations by Portland-based artists like Justin Gorman and Caleb Freese, Pattern People, and high-design glass gurus Esque. When Hess was hired, the walls were already in, "so it was a matter of how custom can we make it within these parameters," she says. The answer? Very. ■



◀ **LEFT**  
 A glass sculpture by Esque (esque-studio.com) sits on a gold-leafed junk drawer and niche cabinet designed by Hess and built by Doug Chamblin.

▶ **BATHROOM, RIGHT**  
 Pharos pendant light from Niche Modern, nichemodern.com  
 Custom wall painting designed by Pattern People (patternpeople.com) and painted by Brent Wick  
 Luis table by Antonio Citterio for B&B Italia, bebitalia.it



tickets on sale now with a special offer for portland spaces readers! [www.pawsandsaws.com/pdxspaces](http://www.pawsandsaws.com/pdxspaces)



a boutique tour of pet-friendly remodeled homes

saturday, june 6

tour six beautiful homes by:  
 arciform  
 green hammer  
 mosaik design



attend the  
 portland spaces  
 post-tour mixer

enjoy iron mutt coffee  
 to start the day and  
 old town pizza, widmer beer,  
 & live music to finish!

connect with animal  
 experts, designers, &  
 fellow pet lovers

all net proceeds benefit  
 oregon humane society



media sponsor



generously sponsored by:  
 hawthorne veterinary clinic  
 heal animal massage therapy  
 jeld-wen windows & doors  
 pacific continental bank  
 the pet loft  
 terraclean  
 versatile sash & woodwork



## Everyone Has Something To Hide

Our custom-crafted Bookcase Door System appears to be an unassuming hardwood bookcase. Yet, what it conceals is limited only by necessity or your imagination. Important documents, valuables, premium wine, an entire room. To create your own hidden space, call or come online and find out more.

503-542-7650  
[everyonehassomethingtohide.com](http://everyonehassomethingtohide.com)

Ask about Custom Accordion Doors.



Portland, Oregon  
 6:08 a.m.



**The Red Cross is here.** A local family was still asleep when a forgotten candle ignited a curtain. They lost everything. But thanks to a Red Cross volunteer—who provided them with clothes, food, and a place to stay—they didn't lose hope. Every 36 hours Red Cross volunteers respond to disasters right here at home. To help. To comfort. To join them, visit [redcross.org](http://redcross.org).

